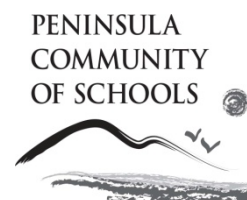




# NEWPORT NATTER



## NEWPORT PUBLIC SCHOOL'S WEEKLY NEWSLETTER

Phone: 9999 3588 9999 4100 Fax: 9979 6928  
After School Care: 9979 9874  
Canteen: 9979 6504

Wednesday 12th June 2013

### PRINCIPAL'S REPORT

#### **Cultural Exchange Program with Punchbowl Public School.**

Last Thursday, as part of our Cultural Exchange Program, Year 4 students, their teachers and many parents travelled to Punchbowl Public School to meet and spend the day with the children's Punchbowl buddies. It was a very exciting day for Year 4 as the children have been communicating with each other as pen pals during the early part of this year. The Punchbowl Public School staff, students and parents were very welcoming to all. The children spent the day with their buddies and engaged in a number of sporting activities and playing on the oval at lunch time. A delicious lunch and afternoon tea was also provided by Punchbowl parents and P & C. The Newport students thoroughly enjoyed the day. They will continue to communicate with their buddies as pen pals until we host a day for our Punchbowl friends in Term 4.

#### **Year 5 Bathurst Excursion**

Next week Year 5 spend three days in and around Bathurst visiting sites that support their current unit of study on the Gold. I know they will have a fantastic time and will be great representatives for our school. Good luck everyone, have a great time.

#### **Peninsula Community of Schools supports Teacher Professional Learning**

As part of the PCS, Newport staff are working with teachers from across our ten local primary schools on the implementation of the new English syllabus for the Australian curriculum. As a local learning community, school executive have worked together to plan teacher professional development to ensure the consistent introduction and implementation of this new syllabus. Our teachers have participated in professional learning that develops their understanding of the changes in this new document. As the year progresses staff from across the ten schools will develop units of work ready for the full implementation of the new English syllabus in 2014.

In Week 4, teachers from all PCS schools participated in professional learning workshops. These courses are run after school and are designed to support the teaching of all our staff. As the Department of Education changes to a model of localised decision making over the next semester, local schools providing support for their teachers will be of great importance. Our PCS is well placed to continue to support its teachers and students.

Additionally the PCS has a partnership with Adobe and is currently training Adobe Educators in every PCS school. These staff members will then act as trainers within their individual schools. We have Mr A Moran, Mr Davidson and Miss Shoebridge currently undergoing training. They will in turn provide training for staff to effectively integrate a range of new technologies into their teaching and learning programs for students. This is a wonderful initiative, only possible through our Peninsula Community of Schools.

#### **Medication at school**

The storage and delivery of medications at school is a serious matter for the safety of all students. Students must not keep medication in their bags or on their person. If your child requires medication during the day, this can be administered by the office staff who are trained in the administration of medicines.

- The medication must be handed to the office along with a signed consent for its delivery.
- The medication must be in its original packaging and administration instructions must be visible.
- Only the recommended children's dose may be given.
- Only medication prescribed by a doctor can be administered, no over the counter medicines can be given, eg Panadol.

It is important to remember that whilst your child may be used to taking and managing medications at home, many other children are not. These procedures ensure everyone's safety.

#### **Parking in our Loading Zone**

I am sending out a request to parents to **not park in our Loading Zone** on Stuart St during the designated times. We receive deliveries to our canteen throughout the week during this morning time. Delivery trucks, now being booked by rangers, cannot make deliveries to our school as they have nowhere to unload. This causes difficulty for the canteen as they try to fill students' orders each day. Please use the designated kiss and drop zones on Queens Parade and Beaconsfield Rd.

## Young Dramatists Showcase

This year, for our Young Dramatists Showcase, we have taken the dramatic form of Masks and Puppets and used them as a springboard into Literacy and Visual Arts lessons. The children have experienced a range of workshops run by Vic Norman and had many performance opportunities in their classrooms. They were able to design, build, decorate and perform. We are most grateful for Vic's, skill generosity and patience.

It has been a most exciting and creative initiative and you will be invited to visit rooms to see the end result in the coming weeks or as part of our Open Day celebration on the Wednesday 31<sup>st</sup> July

## Next P&C Meeting

Tuesday 18<sup>th</sup> June, 7.00pm in the library.

Regards,  
Margaret Charlton  
Principal

## DEPUTY PRINCIPAL'S REPORT

### National Curriculum

The Australian Curriculum, Assessment and Reporting Authority (ACARA), in collaboration with states and territories, has developed agreed Australian curriculum for English, Mathematics, Science and History. Each of these learning areas includes content statements that represent essential learning for all Australian students. In NSW, the Board of Studies has worked closely with teachers and key education stakeholders to develop syllabuses that include Australian curriculum content and further detail that clarifies learning. In 2013 all schools will continue to teach the current syllabuses. In 2014 schools will commence teaching the new English syllabus. This will be followed by the teaching of the new Mathematics, and Science and Technology syllabuses in 2015. In 2016 schools will begin teaching the new History syllabus.

This year, teachers at Newport have engaged in a wide range of professional learning activities around the implementation of the new English syllabus in 2014. The new syllabus identifies the knowledge, understanding, skills, values and attitudes that students are expected to develop in each learning area. They are designed to provide flexibility for teachers to develop their teaching and learning programs to meet the needs of their students.

I would encourage you to visit the Board of Studies website to obtain further information: -

<http://syllabuses.bos.nsw.edu.au>

### Dogs at School

I would like to remind parents that it is a Department of Education policy that dogs are not permitted on the school grounds or to be tied to the fences outside the school **at any time**. This policy was made with the safety of children in mind. I would ask that parents help to keep our children safe and not bring dogs to school. Even the most docile animal can behave unpredictably when frightened or excited. Thanks for your cooperation.

Regards,  
Anthony Moran  
Deputy Principal

## Important Dates for Your Diary

<b>Tuesday 18<sup>th</sup> June</b>	<b>P &amp; C Meeting 7pm in the Library</b>
<b>Tuesday 25<sup>th</sup> June</b>	<b>Fete Meeting 7pm in the Library</b>
<b>Thursday 27th June</b>	<b>Pyjama Day Gold Coin Donation</b>

## MERIT AWARD WINNERS

<b>KSO</b>	Luke Moore, Jas James	<b>3GB</b>	Beau Brennan
<b>KAJ</b>	Rodrigo Wilbert-Camelo, Jasper White	<b>3LS</b>	
<b>KEE</b>	Elliot Moore, Chloe Cogan	<b>3AR</b>	
<b>KDF</b>	Yasmin Ramos, Jesse Heslop	<b>3BF</b>	Lilly Griffiths, Jasper Upton
<b>KJP</b>	Zara Debelak, Max Monaghan	<b>4NE</b>	
<b>KEJ</b>	Olivia Lisle, Vishal Fisher	<b>4KH</b>	
<b>KMG</b>	Kian Hooper-Nguyen, Isabella Stephens	<b>4SC</b>	
<b>1SN</b>	Kaija Parums, Lara Silver	<b>4LC</b>	
<b>1JJ</b>	Romy Cormack, Billee Wooler	<b>5LH</b>	Toby May, Amy Le Blang
<b>1DD</b>	Aron Brennan, Caleb Robinson	<b>5TD</b>	Phoebe Jewry, Hugh Downey
<b>1JG</b>	Lachlan Zaraza, Lilyana Wawavanua	<b>5RW</b>	
<b>1/2JF</b>	Elsa Hudson, Joel Ratcliff	<b>5/6AH</b>	Nathaniel Dunwell, Charlise Walker
<b>2BN</b>	Finn Epplert, Ella Hadzic	<b>6GM</b>	Bettina Cilia, Ella Paton
<b>2AM</b>	Louie Moran, Beth Maguire	<b>6KK</b>	Charli Wiles, Jayden Grech
<b>2SC</b>	Heidi Adams, Logan Unwin	<b>6IW</b>	James Barrett, Tess Downey

## **SYDNEY NORTH DANCE FESTIVAL**

It's Dance Festival Season! The Sydney North Dance Festival is coming up. The Festival is held at Glen Street Theatre from June 17 to June 28 this year. Ninety-seven schools will perform 178 items over 27 different programs. Newport School is offering the opportunity for students in Years 2 - 6 to experience performances at the Festival on Friday June 28, 2013. Newport students will be performing on this date. June 28 is the last day of Term 2 (PSSA is not conducted on this day).

A permission note went home last week outlining the performance times and the cost of the fully supervised excursion. These notes and money need to be returned to school by Wednesday, June 12. Payment can be made by cash, cheque or credit card to the front office. 60 tickets for each of the two shows have been purchased. Notes returned to school will be numbered in the order in which they are received and only the first 60 students (for each show) will be joining the excursion.

If you have not received a permission note, please call into the office and collect one.

**Thank you  
Nicola Elliott**

## **CHESS NEWS**

Last Friday Newport A had a 1 to 3 loss against St Martin's Davidson A while Newport B Juniors had a 3 to 1 win against Wheeler Heights Juniors.

This Friday is a home match with Newport A playing John Colet A and Newport B playing Oxford Falls Grammar D Juniors.

**Mark Tickle**

## **SNOW SPORTS NEWS**



Uniform payments are due for all competitors. New members vest and skivvy combination is \$50.00 while others need pay just \$10.00 for skivvy and vest embroidery update. Please send all money to Mr Tickle in a labelled envelope. Cheques can be made out to Newport Public School.

**Mark Tickle**

## **BOOK CLUB 2013**

All K-6 classes have received Issue 4 of Scholastic Book Club. All orders need to be placed in an envelope clearly marked BOOK CLUB with your child's NAME and CLASS. Cheques made payable to SCHOLASTIC and credit card payments are preferred. You can combine your orders and pay for them as one single payment. Credit card payments can be paid on-line or by phone and your receipt number needs to be recorded and sent back to school with your order. Please send K-2 orders to Mrs Falconer and 3-6 orders to the Library.

Orders are due back by **FRIDAY 7th June**

Please allow 2 weeks for your books to arrive.

If you have any questions, please see Mrs Falconer or Mrs Ericsson.

Book Club helps our school to purchase books and equipment for our Literacy programs.

Remember to **READ EVERY DAY THAT YOU EAT!**



## **NO WRAP WEDNESDAY**

Congratulations to Sophie Rawstorne and Lilly Fahey of KMG! Sophie and Lilly won the NO WRAP WEDNESDAY prize for May and both chose a recyclable, reusable prize. Each Wednesday, students who bring in a NO WRAP lunch receive a raffle ticket for a reusable prize. The prize is drawn monthly. Well done, Lilly and Sophie! Mrs Gutherson tells me that both girls are dedicated "No Wrap Lunchers" so, congratulations to you both. Keep up the good work on those NO WRAP Lunches.

### **Bakers Delight & Newport Public School Fundraising!**

**Mention you belong to Newport Public School when you buy products from Bakers Delight Newport and they will donate 5% of your sale to our school!**

***Until 30<sup>th</sup> November 2013***

## 2013 PCS MUSIC FESTIVAL TICKETS

A ticket order form will go out this Thursday to your child if they are performing in the choir or a featured item at this year's festival.

Ticket sales will be next Monday 17<sup>th</sup> and Thursday 20<sup>th</sup> June before school from 9am outside Mrs Falconer's room. Please have your child's order in an envelope labelled with their NAME, CLASS and CHOIR or DANCE. Please ensure that the correct money or cheque payable to 'Newport School' is included.

Tickets will be distributed in Week 1 of Term 3.

Each performer has been allocated two tickets. Should you require further tickets, a second round of tickets will be offered in Week 1 next term if all tickets have not been sold previously.

**Jenny Falconer**  
**PCS Music Festival Treasurer**

## MUSIC NEWS

**Music Committee Meeting** has been changed from tonight (12/6/13) to next week (19/6/13). Same place (staff room), same time (7.30pm). Everyone welcome.

**Northern Beaches Instrumental Festival** will take place from 21<sup>st</sup> to 23<sup>rd</sup> June. Tickets will be available at the door: adult \$5, concession \$3, family \$10 (performers free). Times are listed below.

Please note it has been brought to our attention that there is a clash between the **Performance Band** scheduled time (6.45pm on Friday 21/6/13) with a dance festival which is concerning some parents. We are trying to change the time that Performance Band plays to the Sunday. We did not know if this is possible at this late stage. Please look out for an email from your band manager.

After the **String Orchestra** performance on Saturday 22/6/13 the students are encouraged to stay for the evening showcase concert performed by the Northern Beaches Orchestra. This is included in the ticket price and should be fabulous!

Please note that all musicians & audience/parents need to be in present for entire session.

Band uniforms to be worn. Training Band can borrow white shirts for the Music Program. Concert band need to purchase black polo shirts, please refer to an email sent by Bindi Hooghuis on 2<sup>nd</sup> June.

## Dates for Diary

11 <sup>th</sup> & 13 <sup>th</sup> June	<b>Stage Band</b> performing at school assemblies
18 <sup>th</sup> June	<b>Violin 1s</b> performing at infants assembly
19 <sup>th</sup> June	<b>Music Committee Meeting</b>
20 <sup>th</sup> June	<b>Violin 2s</b> performing at primary assembly
21 <sup>st</sup> June	<b>Performance Band</b> performing at Northern Beaches Instrumental Festival (NBIF). Time to possibly change, please look out for email from Band Manager
22 <sup>nd</sup> June	<b>String Orchestra</b> performing at NBIF. Arrive 4.45pm. Session time 5.05pm to 6.30pm.
23 <sup>rd</sup> June	<b>Training Band</b> performing at NBIF. Arrive 10.15am. Session time 10.25am to 11.25am
23 <sup>rd</sup> June	<b>Concert Band</b> performing at NBIF. Arrive 3.10pm. Session time 3.20pm to 4.30pm.
25 <sup>th</sup> & 27 <sup>th</sup> June	<b>Performance Band</b> performing at school assemblies

## Canteen News

### Next Week's Roster

**Monday June 17th:** N Roach, M Stidwell, D Clinton, B Griffiths

**Tuesday June 18th:** T Sturzaker, N Sampson, J Turner, M Burlinston, L Brown

**Wednesday June 19th:** P Hitchman

**Thursday June 20th:** F Douglas, K Tulloch, N England, S Lowe

**Friday June 21st:** V Watkins, L Barlow, K Meek, T Leslie

If you are unable to make your rostered day, please call Tammy on 9979 6504 or email the canteen

[newportschoolcanteen@hotmail.com](mailto:newportschoolcanteen@hotmail.com)



**YEAR 6 FUNDRAISER - PYJAMA DAY**  
**THURSDAY 27<sup>TH</sup> JUNE**  
**GOLD COIN DONATION**

### **Dairy foods are important for strong bones and teeth.**

The Australian Guide to Healthy Eating recommends children eat 2-3 serves of dairy foods, such as milk, cheese or yoghurt each day. Why not try including these high-calcium containing foods:

- milk on cereal or a tub of yoghurt at breakfast
- cheese on crackers after preschool
- fruit smoothie as a drink
- custard and fruit or as dessert.



### **Fundamental movement skills**

There is evidence that children with poor fundamental movement skills such as jumping, skipping, leaping, kicking, throwing and catching are less likely to be active. Give your kids a head start and teach them these skills.



### **UNIFORM SHOP NEWS**

#### ***Hats***

If ordering hats online or in person for Kindergarten and Year 1 students, broad-brimmed hats will be supplied in accordance with the school uniform policy. Next year Kindergarten, Year 1 and Year 2 students will be required to wear the broad-brimmed hats. Please remember that this is the school's policy and that Uniform Shop staff are following guidelines as set by the P&C.

#### ***Support***

Thank you to parents who support the uniform shop. All profits raised go to the P&C to pay for things such as teaching support staff and improvements to school facilities.

#### ***Ordering***

Orders placed online at [flexischools.com.au](http://flexischools.com.au) prior to 5pm on Fridays will be delivered to your child's class on the following **Monday or Tuesday**. Order forms can also be collected from the office or emailed on request. Please contact us if you have any order queries.

#### ***Opening Hours***

The Uniform Shop is open Mondays 9-10am and Tuesdays 3-4pm. We accept cash or cheque. Credit card payments are accepted when ordering via [flexischools.com.au](http://flexischools.com.au).

For enquiries, please contact [newportuniformshop@hotmail.com](mailto:newportuniformshop@hotmail.com) or Carla Pettitt 0413-804-015 & Kate Raffles 0413-519-872.

### **Mums for Mums Story:**

Mums for Mums was formed in 2011 and has been set up to assist local families, within the Newport Community, through times of illness so that they can spend more time as a family and have support from our wonderful local community.

Mums for Mums provide assistance with cleaning, laundry, meals, providing transport to and from treatment, physical and/or mental rehabilitation and financial support – each family we assist has different needs. We have supported 15 families since 2011 and are currently supporting 6 families within the Newport School community. The individual circumstances are different ranging from various types of cancer, brain tumours, significant injury and/or illness of a parent or child and loss of a loved one. In all cases the wish for privacy and confidentiality is respected, however our desire to help as a community is very strong no matter the circumstances.

Mums for Mums are run by a committee of Newport mothers and is solely funded by donations and special fundraising events. We recently organized an outdoor movie night, showing Mamma Mia! at Bert Payne Park Newport, which was a huge success and we are looking forward to our upcoming **Cocktail Party on 24<sup>th</sup> August 2013!**

Please find attached an invite to this event, which will prove to be the social event of the NPS calendar year.

If you need help or you know of an individual or family who need help please send us your contact details via our email or website and Katrina Meek the founder of Mums for Mums will contact you to discuss the situation.

<http://www.mumsformums.org.au/>





You are invited to attend the Peninsula Community of Schools Art Exhibition in celebration of the Guringai Festival

***"Live Life Loudly"***

Please come along and enjoy the "UNITY in our CommUNITY Art Exhibition" showcasing student work from Kindergarten to Year 12 of the Peninsula Community of Schools. The collection of artworks reflect the Guringai Festival's theme: "Live Life Loudly", the Reconciliation theme "Say Something" and the 2013 NAIDOC theme "Yirrkala Bark Petitions 1963"

**Where:** Wheeler Heights Public School

Veterans Parade Wheeler Heights

**When:** Wednesday 26<sup>th</sup> June

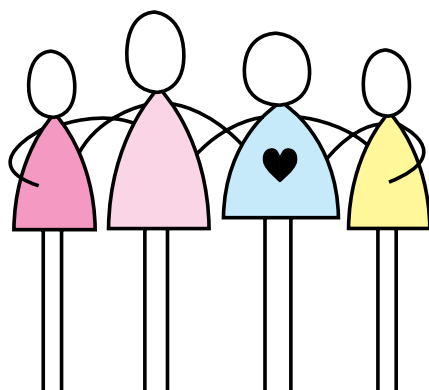
**Time:** 5:00pm – 7:00pm (Official Welcome at 5:30pm)

**Admission:** Gold coin donation

(Funds raised support Literacy Backpacks)

Light refreshments will be available

Enquiries: [Sharon.smithies@det.nsw.edu.au](mailto:Sharon.smithies@det.nsw.edu.au)



MUMS for MUMS

# cocktail party

Saturday 24th August, 2013

6.30pm

at the Royal Motor Yacht Club, Newport

Ticket price includes a  
cocktail on arrival (to be served from 6.30-7pm),  
canapes and the fabulous band £90.

**\$80** per person

Dress: cocktail

To purchase tickets

**-CLICK HERE-**

(or visit [www.mumsformums.org.au](http://www.mumsformums.org.au))

Tickets are limited to 300, so please purchase  
them ASAP to avoid disappointment.

Thanks for helping to support Mums for Mums



**eventful**  **kids**

**SPECIAL WEEKEND  
ENTERTAINMENT  
FREE FOR KIDS**

**WHILE RAISING FUNDS FOR  
SAM BLOOM**

CENTRO WARRIEWOOD • SAT 15-16 JUNE





# Eventful Kids together with Centro Warriewood will kindly entertain your kids for an hour

## ★ FREE! ★

They'll have loads of craft and creative activities to pursue while you pursue some bargains.

The best part is that all proceeds from both Saturday and Sunday will go towards Sam's ongoing rehabilitation after her tragic accident in Thailand. Any donations on the day will be greatly appreciated.

Of course if you can't make it, you can donate online at [mumsformums.org.au](http://mumsformums.org.au)



**10AM – 4PM • SATURDAY 15-16 JUNE**  
**CREATIVITY CENTRE LOCATED OUTSIDE KMART**  
**CENTRO WARRIEWOOD, JACKSONS ROAD**



**Mums for Mums Newport**

Generously supporting our event. 100% of funds raised by this registered charity will be used towards Sam's ongoing rehabilitation and care.  
[mumsformums.org.au](http://mumsformums.org.au)

# GARAGE SALE

## SATURDAY 15<sup>th</sup> June

Wilmette Student Exchange  
Pittwater High School Hall

Huge selection of priceless artefacts,  
including:

Books, furniture, sporting goods, bikes,  
toys, kitchenware, clothes etc

Sausage Sizzle / Egg & Bacon Rolls

Tea/coffee & cakes

Available for sale



8.00am to 2.00pm

